

# Why conceptplans?

In Riga, Ziepju street three separate workshops for three different neighboring user groups were held.

In each workshop the group of approximately 20 people were divided into smaller groups of 5-6.





Each group presented main ideas in their vision for the outdoor space.





This led to 4 separate visions per workshop. Since there were no designers participating in the workshop, idea was made to create “conceptplans” to ease the use of workshop outputs later.



## 1. Social housing residents' visions

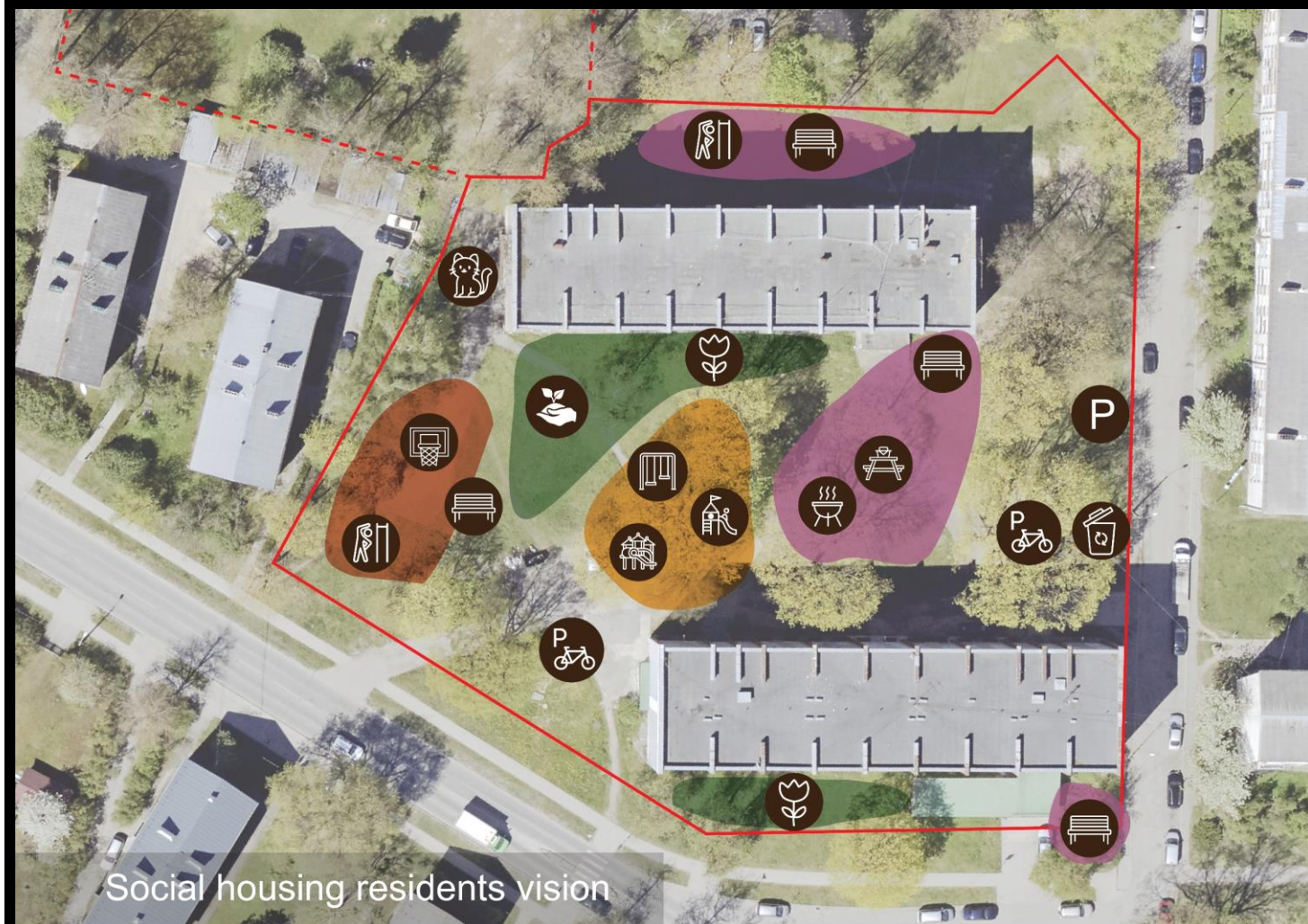


# 1. Social housing residents' vision – combined in one plan

Municipality architect watched the video presentations of groups and placed in one map:

1. activities each group stressed the most
2. unique activities/ideas from each group
3. Based on local insights arranged these activities

Such combined plan was created for each workshop.



## Legend:

Sport area	Sports field	Waste containers	Youth playground	Bike parking
Play area	Outdoor gym	Cat house	Kids playground	Picnic tables
Nature area	Deposit point	Flowers, plants	Swings	Benches
Relax area	Parking	Urban gardening	Barbecue	



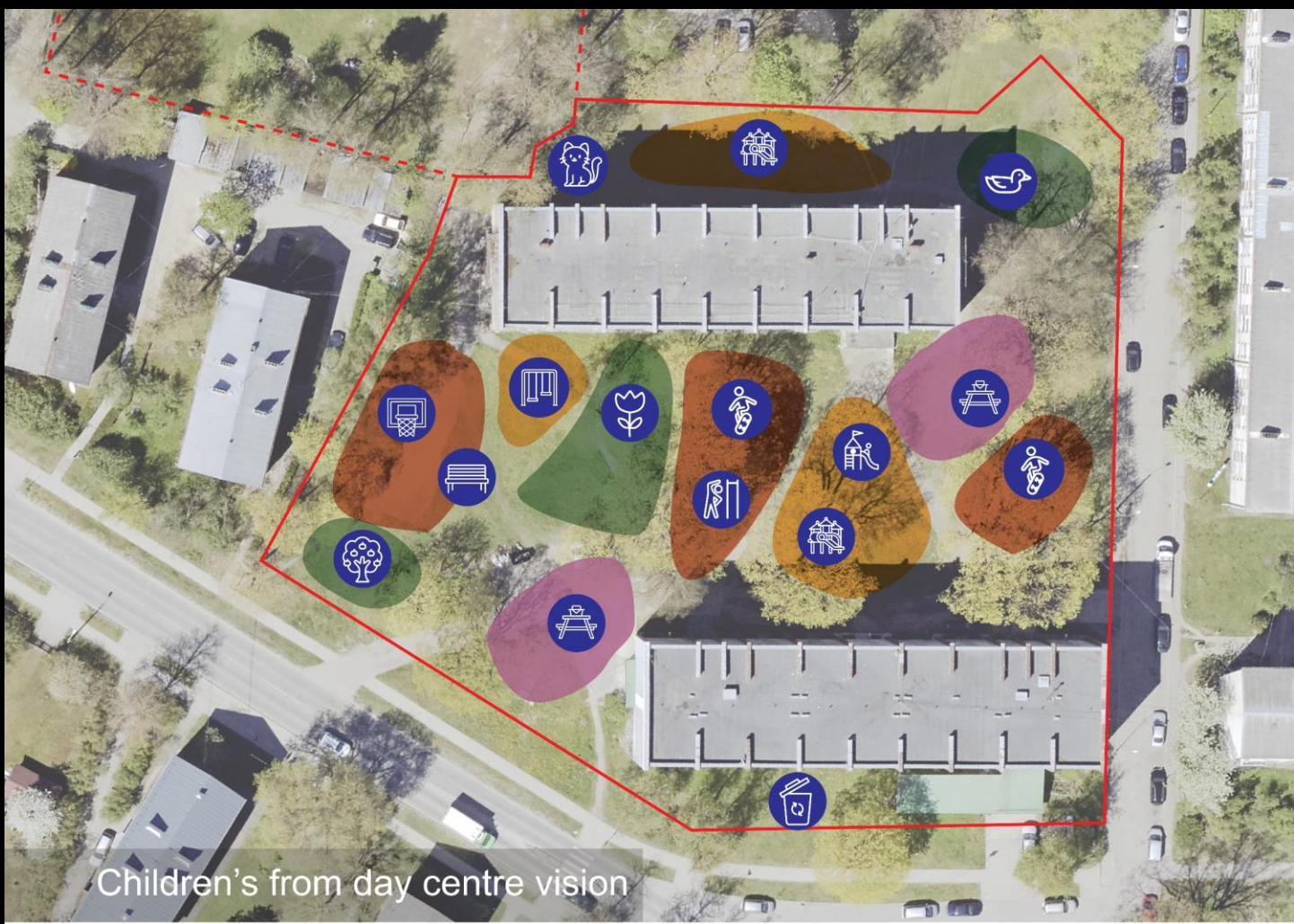


## 2. Children's from day center vision





2. Children's from day center vision – combined in one plan



Children's from day centre vision

Legend:

- |   |   |   |  |   |
|---|---|---|--|---|
|  Sport area  |  Sports field  |  Wildlife        |  Youth playground |  Apple trees   |
|  Play area   |  Skatepark     |  Cat house       |  Kids playground  |  Picnic tables |
|  Nature area |  Outdoor gym   |  Flowers, plants |  Swings           |  Benches       |
|  Relax area  |  Deposit point |   |  |   |





### 3. Mentally challenged youth vision





### 3. Mentally challenged youth vision – combined in one plan



#### Legend:

	Active area		Sports field		Urban gardening		Apple trees
	Nature area		Pergola		Barbecue		Picnic tables
	Relax area		Outdoor gym		Flowers, plants		Benches
			Swings		Waste containers		Parking



