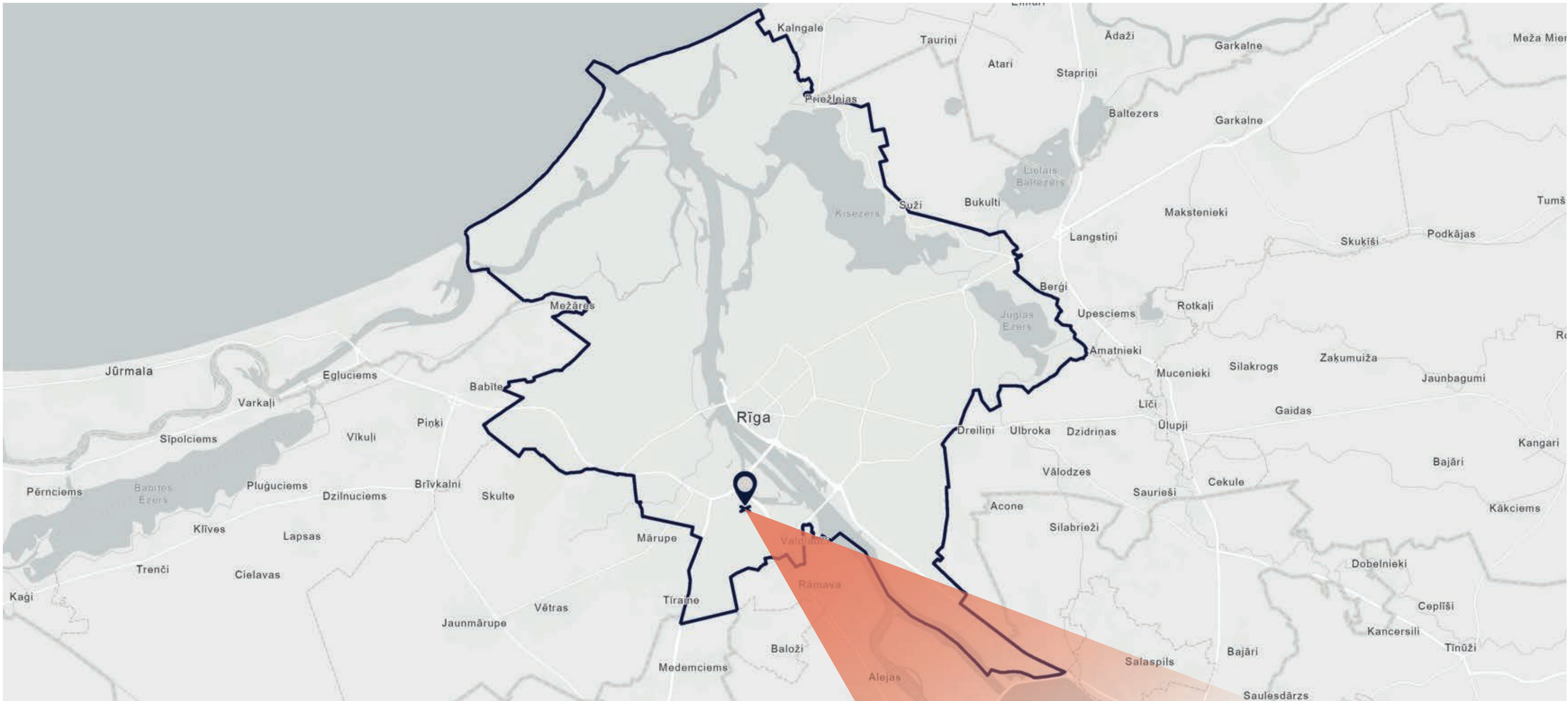


Ziepju

map/location



Area	5000 m²
Built area	900 m²
Green area	4000 m²
Demographics	people with mental disorders, disabilities, low-income families
No. of inhabitants	planned ~120 residents
Ownership	City owned
Partners	5 partners involved at the site
Site representative	The Municipality



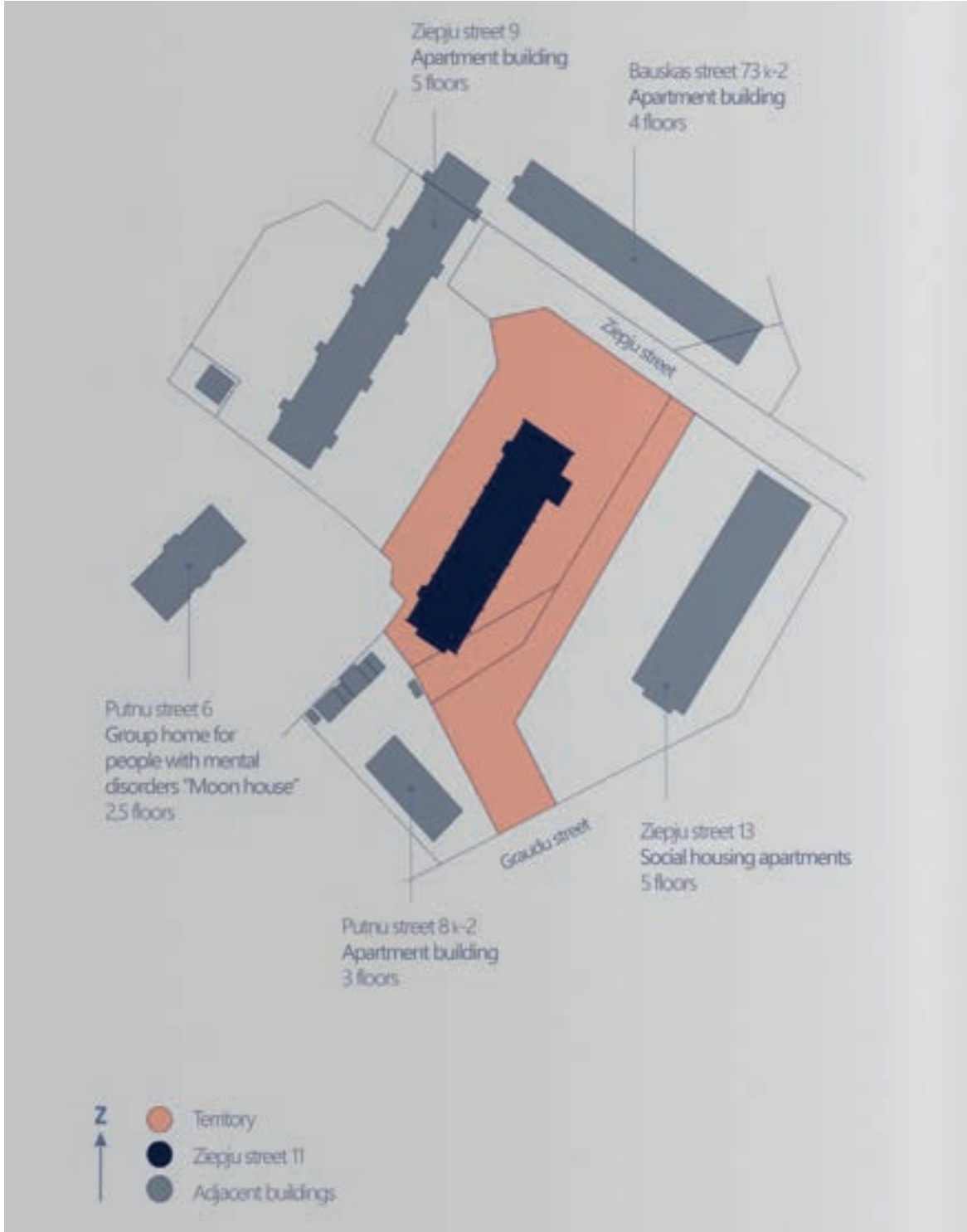
the site



The operation of the building in Riga, Ziepju street 11, began in 1970, when it was used as a service hotel for the employees of the nearby trolley-bus park. It was built as a five-story building of brick and panel construction with a basement. The building has been empty since 2018. In the same year a decision was made to rebuild the building into a multi-apartment rental residential building.

With up to 6000 modernist block buildings up for renovation and energy efficiency improvements in upcoming years Riga is in a dire need to kickstart a cross-disciplinary discussion and re-evaluation of existing renovation practices in order to find affordable and context-sensitive approaches.

Through another initiative process has begun to locally adapt the principles of material and construction circularity to refurbish a derelict Soviet building to modern living standards while striving for small innovations for municipal social services that build on the strengths of the community and neighbourhood. The project will house families with physical and mental disabilities opening the ground level to variety of social services and community centres for the neighbourhood thus forming a symbiotic relation between different groups.



Territory



All images, renderings and illustrations belong to the project site and/or potential partners and have been shared with DESIRE. Some images and illustrations have been cropped or edited due to readability.

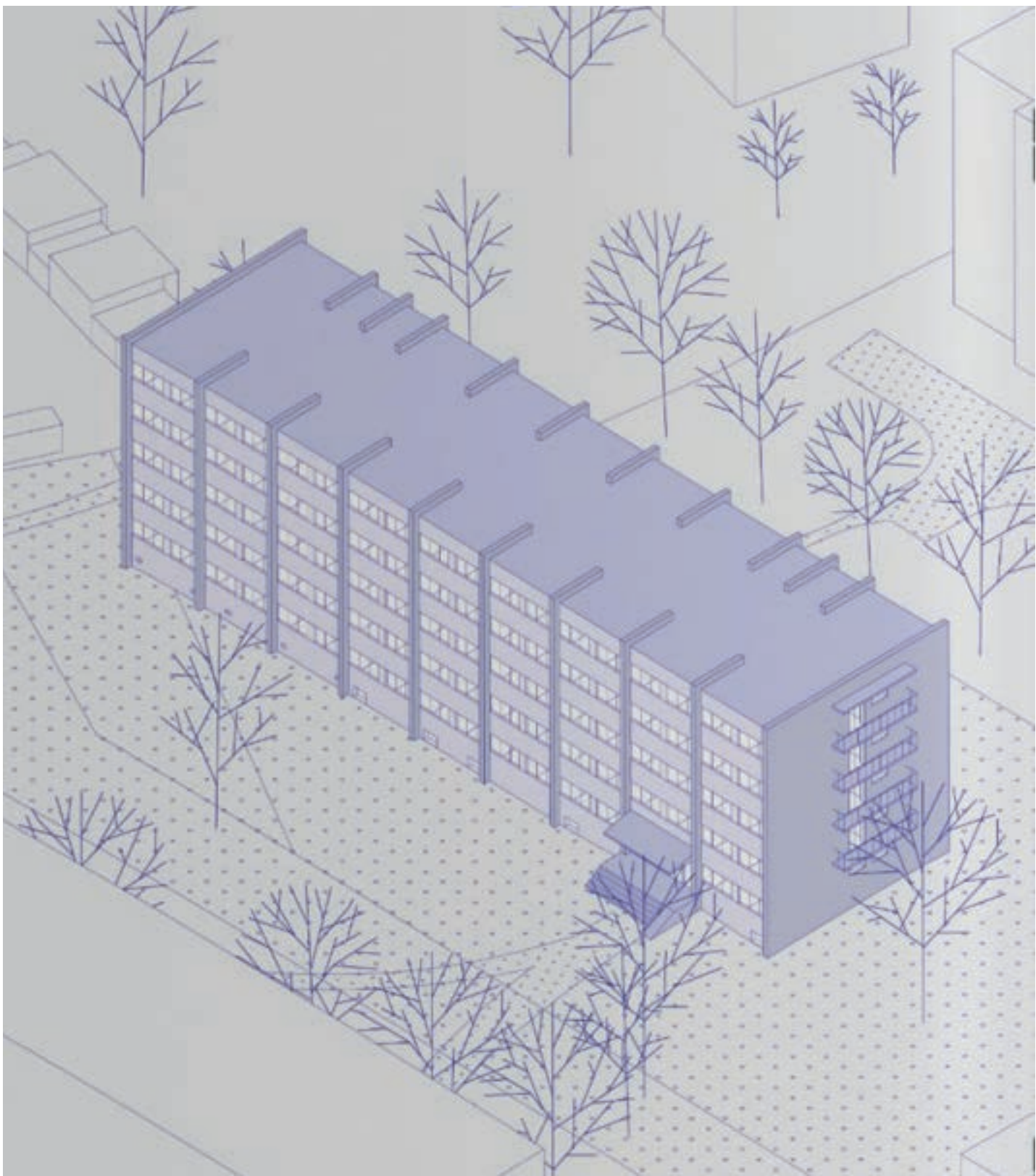
Ziepju

area qualities

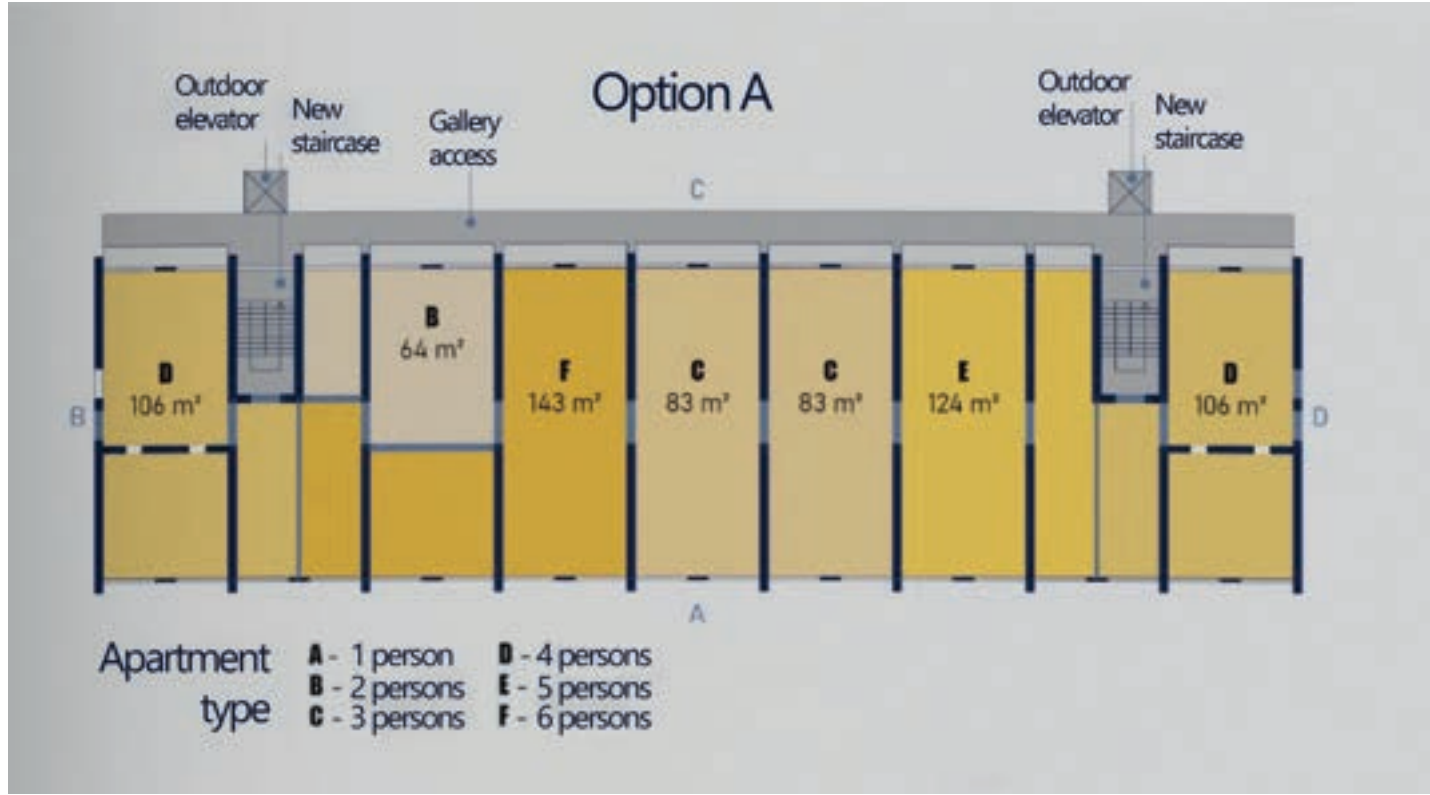
The project serves as the city's attempt to re-evaluate the qualities of socialist architectural design and its form and function based social programming within modern socio-economic and ecological context. In the race for the affordable energy efficiency solutions the aesthetics of modernist buildings are neglected thus producing masses of identically looking, poor design neighbourhoods. In turn, such negligence continues to further erode the communities, local identity, and place attachment.



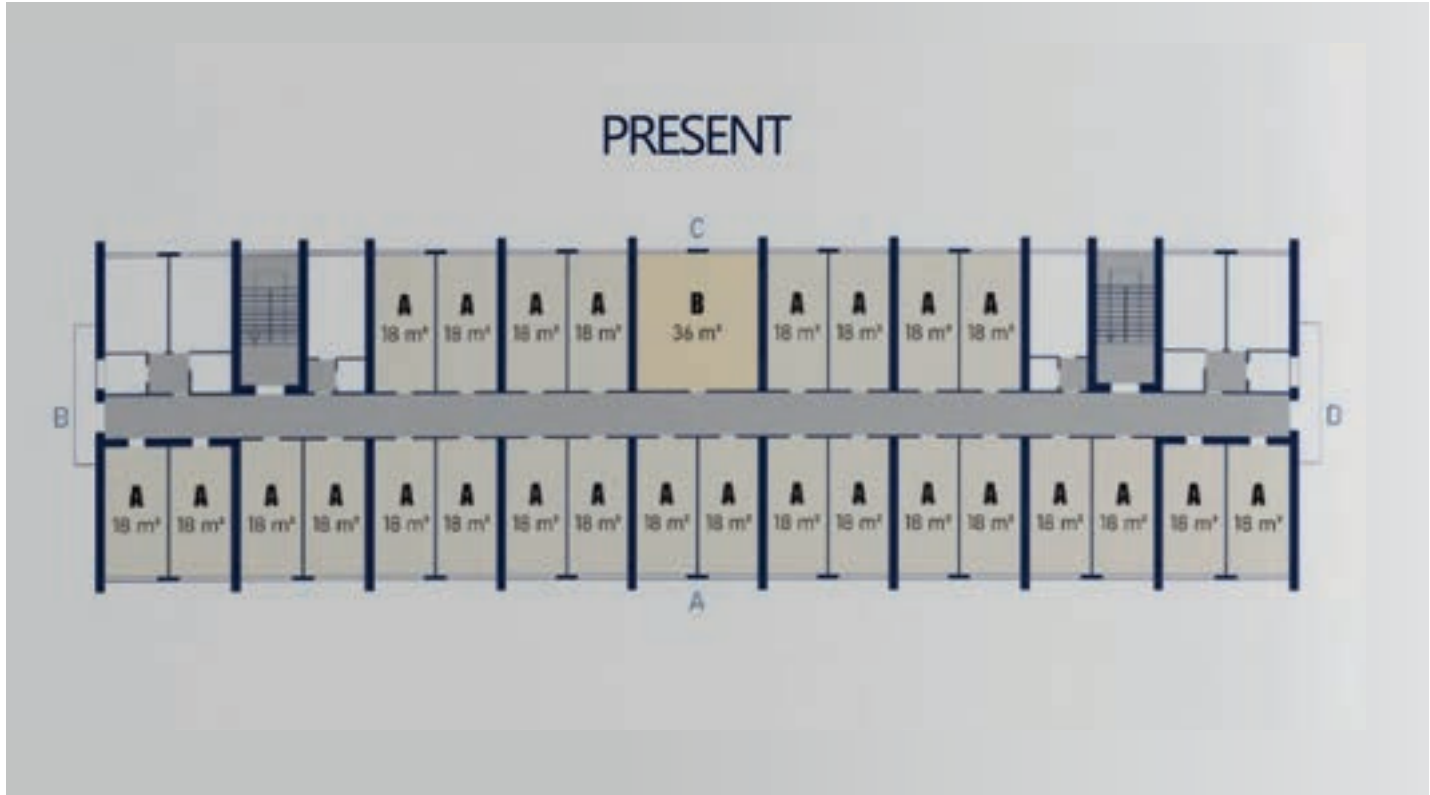
Option A building



Present building



Option A plan



Present plan



Option B plan



Architectural research

vision

The future vision must merge the ideas of local stakeholders, social workers, sensitive groups of future inhabitants and clients with architects, designers, planners, landscape-architects, and artists for cross-disciplinary and innovation.

Up until now there was no scenario detailed with landscape taken into consideration, so we must work on incorporating surrounding landscape with similar approach. Deconstruct limitations of the building by expanding functionality outdoors – adjust stakeholder needs, wishes with sustainable, biodiverse landscape that can tackle climate change induced difficulties. By looking at housing projects and surrounding environment as complex picture, we can achieve even better use of materials, compatible solutions for stormwater management and elevate not only living conditions for inhabitants, but also improving city's green and blue infrastructures.



future activities timeline